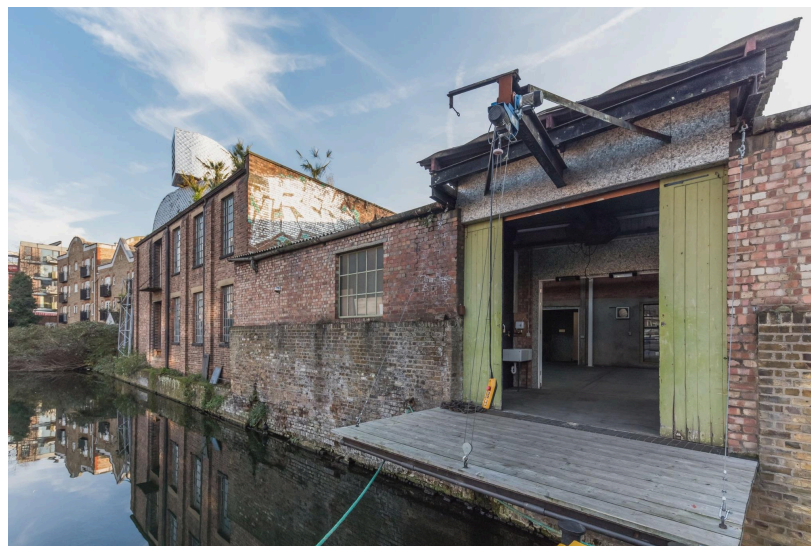
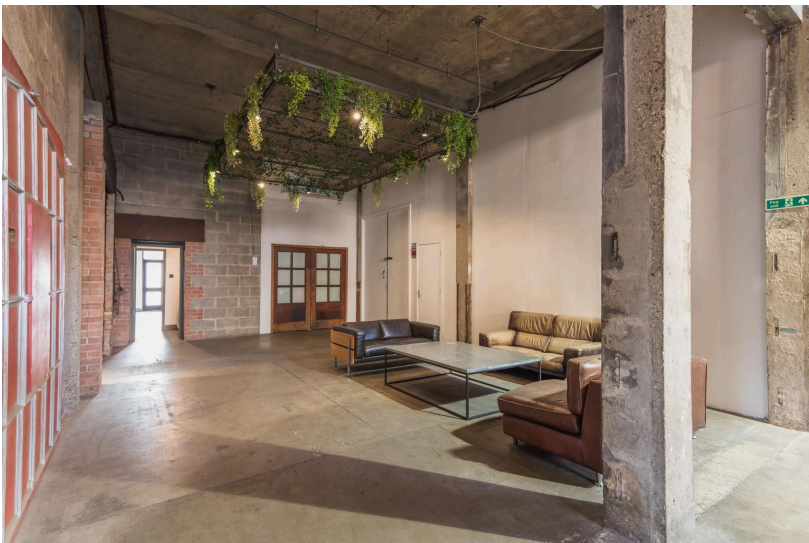


Originally a former coal storage facility, the Regent is a blank canvas, presenting a 10,000 sq ft versatile venue and creative hub in London's E2 district situated along an iconic London waterway.

Features: 10,000 sq / Former coal storage facility / Situated along an iconic London waterway / Yard / Green room / Deck space on the water / Photo studio featuring an infinity cove / Rooftop / Various studio spaces / Waterfront views / Exposed brick walls / Concrete floors / Columns / Steel beams.





More images can be found on the Location Page on our site:

<https://www.imaginelocations.com/locations/regent>

CONTACT IMAGINE LOCATIONS

Name of Person: Chloë Beauvois Eames

Email: bookings@imaginelocations.com

KEEP IN TOUCH



[@imaginelocations](#)



[@imaginelocations](#)