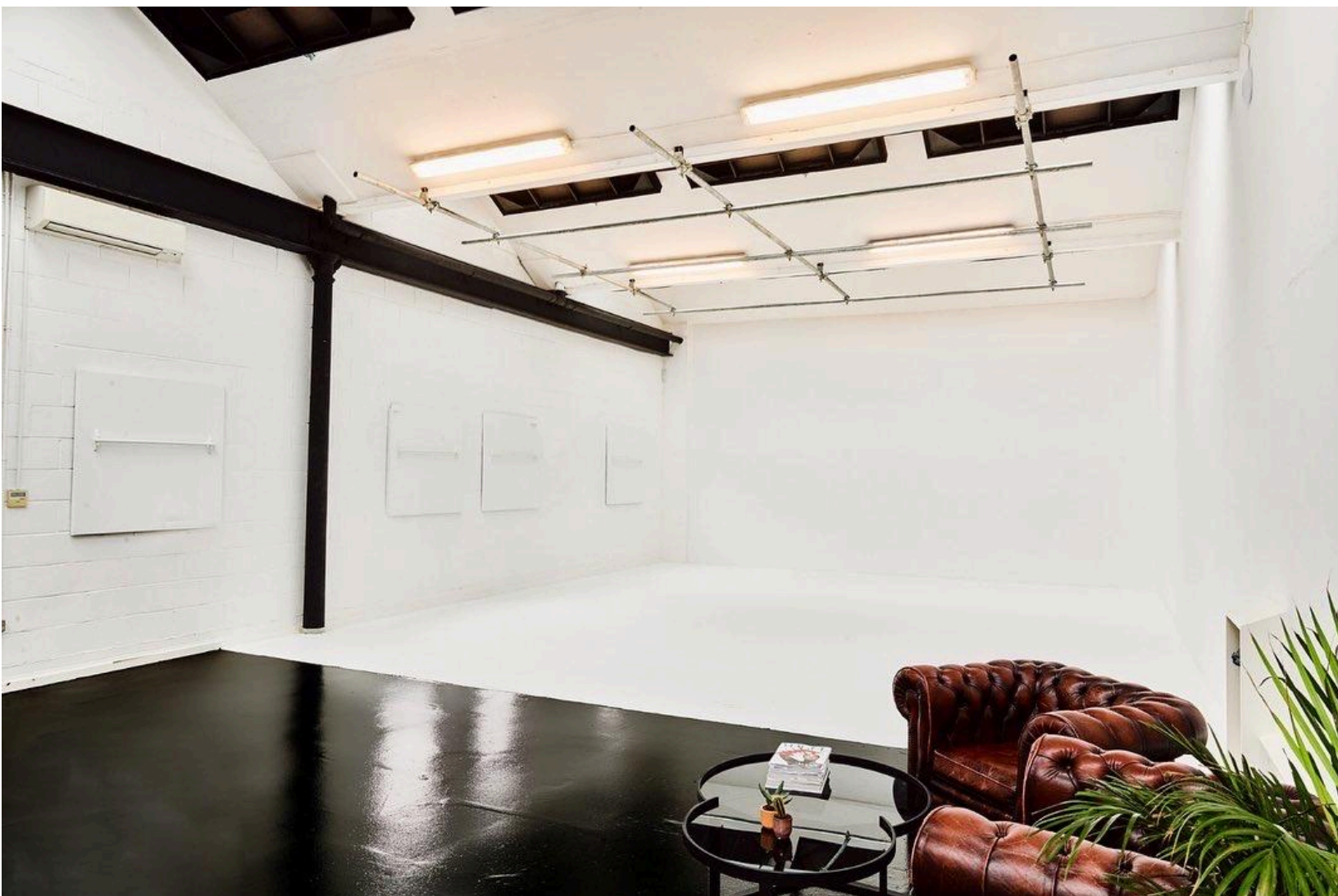
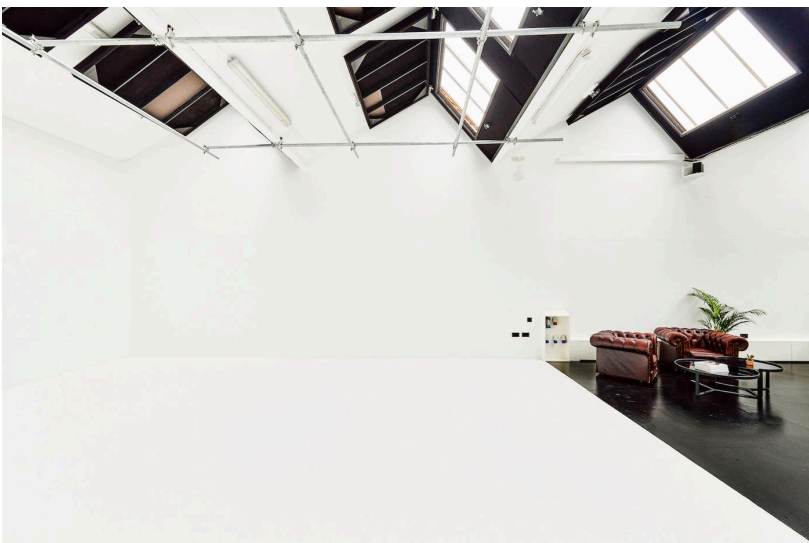
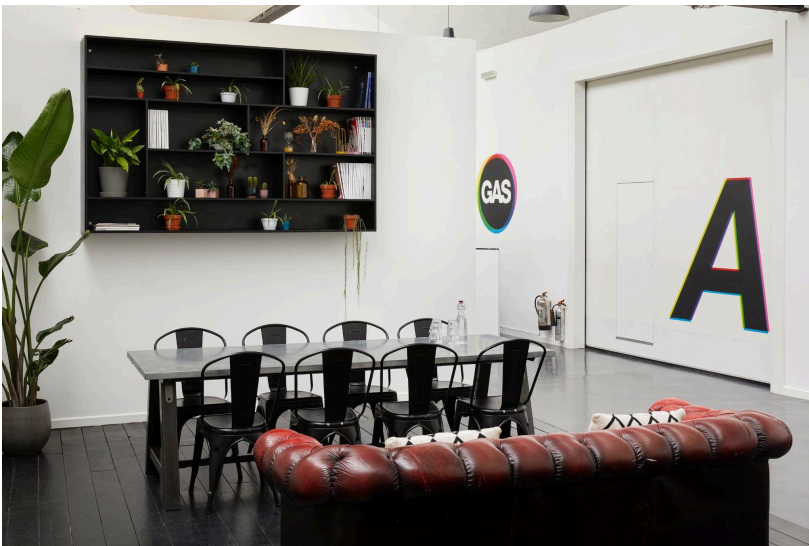


Three fully serviced North London studios, two infinity coves and access to a kit warehouse located across the road.

Our client areas and green room are purposely built to be an oasis during shooting. Comfortable, ample seating, climate controls and lockable doors make it easy to get some work done and escape the chaos of a production. Each studio comes with the option to include a fully stocked drinks fridge and snack tray.





More images can be found on the Location Page on our site:

<https://www.imaginelocations.com/locations/pure-white>

CONTACT IMAGINE LOCATIONS

Name of Person: Chloë Beauvois Eames

Email: bookings@imaginelocations.com

KEEP IN TOUCH



[@imaginelocations](#)



[@imaginelocations](#)