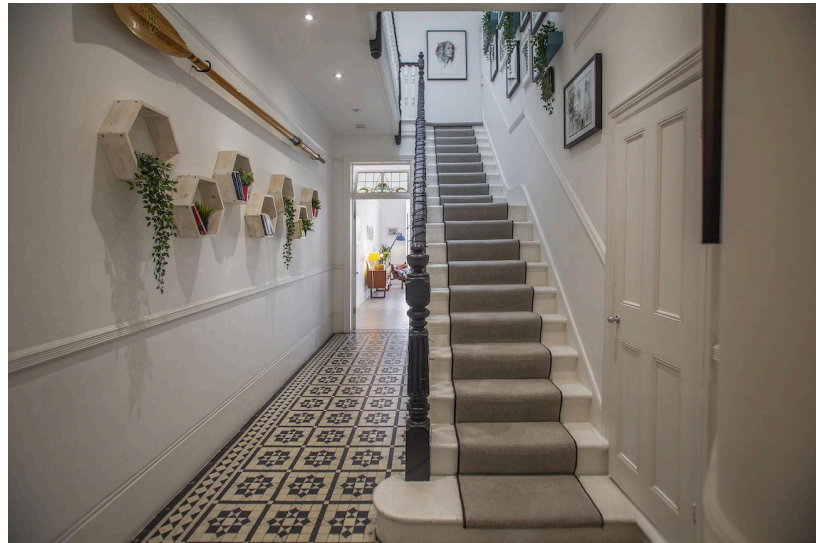


A spacious and easily accessible 5-bedroom house in W3. With 2,800 sq ft of versatile space spread over three floors and 10 ft high ceilings on the ground floor.

Features: 5-bedrooms / 2,800 sq ft of space / 10 ft high ceilings / Floor-to-ceiling sliding doors / Original Victorian tiled flooring / Stained glass door / Stairwell with a skylight / Blue freestanding bath / Herringbone-tiled shower / Geometric tiling / Lime green laminate flooring





More images can be found on the Location Page on our site:

<https://www.imaginelocations.com/locations/cole>

CONTACT IMAGINE LOCATIONS

Name of Person: Chloë Beauvois Eames

Email: bookings@imaginelocations.com

KEEP IN TOUCH



[@imaginelocations](#)



[@imaginelocations](#)